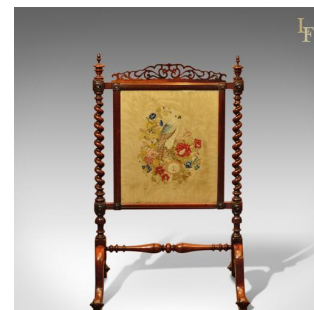


Victorian Rosewood Antique Fire Screen, c.1850

**DESCRIPTION**

Our Stock # LFA-1296

This is an antique, Victorian fire screen dating to c.1850.

Fine quality and constructed in rosewood with great attention to detail, this screen displays a deep lustrous shine and wonderful antique patina.

Rising on scrolled feet, the cabriole legs are united by a turned stretcher. The screen panel is flanked by a pair of fabulous barley twist column supports, superior to most, with upper turned finials. Above the screen a pierced fretwork mount completes the presentation.

The decorative panel of needlepoint textile behind glass depicts a bird and floral spray, with green baize to the reverse.

This English piece is of super quality, presented in good antique condition. Solid joints and construction. Delivered waxed & polished.

Search [London Fine](#) for #LFA-1296 or scan the QR code for more photos and details

DIMENSIONS

Max Width: 69cm (27.25")

Max Depth: 55cm (21.75")

Max Height: 113cm (44.5")

