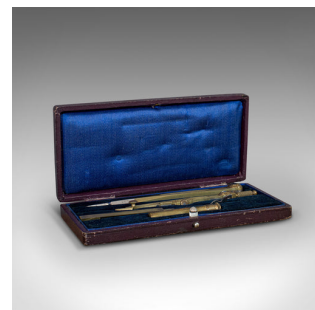


## Vintage Travelling Cartographer's Compass Set, English, Drawing Instruments



## DESCRIPTION

Our Stock # 18.6899

This is a vintage travelling cartographer's compass set. An English, brass drawing instrument case, dating to the early 20th century, circa 1930.

- Useful travelling instruments
- Displaying a desirable aged patina
- Brass instruments in good order with pleasing weathering
- Pair of compass with spare graphite drawing tips
- Presented within a quality leather covered case
- Lined with dark coloured baize and a flash of cobalt blue fabric to lid interior

This is a charming vintage cartographer's compass set, with quality instruments and a presentation case that makes it ideal for desk display. Delivered polished and ready for the study or use in the field.

Search [London Fine for #18.6899](#) , or scan the QR code for more photos and details

## DIMENSIONS

Max Width: 14cm (5.5")

Max Depth: 7cm (2.75")

Max Height: 2cm (.75")

## LIST PRICE

£225.00

