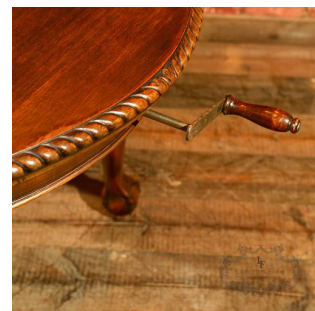


Victorian Extending Dining Table, c.1900



DESCRIPTION

Our Stock # LFA-1289 This is an antique, Victorian extending dining table dating to c.1900. The table is raised on substantial cabriole legs with good quality, deep relief acanthus leaf knee carvings gently tapering down into talon and ball feet with hidden castors. The top displays well with a slightly distressed finish edged with a gadrooned moulding above a plain frieze. The original winder locates through an aperture at one end and operates the smooth action of the extending mechanism. Two additional leaves, with good colour match, are available for a staged table extension turning the four seater into a six. A solid functional table with an aged finish delivered waxed, polished and ready for the home.

Search [London Fine for #LFA-1289](#) or scan the QR code for more photos and details

DIMENSIONS

Closed Width: 128cm (50.5")
 Width with one leaf: 155cm (61")
 Max Width with 2 leaves: 182cm (71.75")
 Max Depth: 106cm (41.75")
 Max Height: 74cm (29.25")

