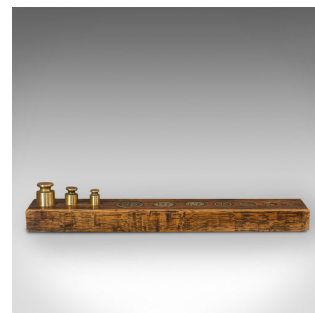


Antique Decorative Troy Weight Set, English, Oak, Brass, Display, Edwardian



DESCRIPTION

Our Stock # 18.6701

This is an antique decorative troy weight set. An English, oak and brass display piece, dating to the Edwardian period, circa 1910.

- Fascinating desk ornament
- Displays a desirable aged patina
- Brass troy ounce weights permanently set within an oak case
- Oak shows fine grain interest and appealing colour
- Troy weights traditionally used to assay metals

This is a charming antique decorative weight set. Well suited for display on a desk for those with an interest in precious metals or coins. Delivered waxed, polished and ready for the home.

Search [London Fine for #18.6701](#) , or scan the QR code for more photos and details

DIMENSIONS

Max Width: 4.5cm (1.75")

Max Depth: 26.5cm (10.5")

Max Height: 4.5cm (1.75")

