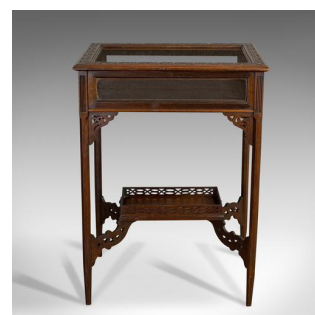




Antique Bijouterie Table, English, Walnut, Glass, Display, Edwardian, Circa 1910



DESCRIPTION

Our Stock # 18.6636

This is an antique bijouterie table. An English, walnut and glass display table, dating to the Edwardian period, circa 1910.

- Fascinating Edwardian table
- Displays a desirable aged patina
- Walnut resplendent in rich caramel hues
- Fine grain interest and carved detail throughout
- Glass display vitrine in good, original order – internal lock absent
- Carved fretwork decorates the perimeter of the lid
- Opens smoothly with support provided by a link chain
- Interior lined with deep charcoal baize
- Fluting to shoulders adds distinction
- Shaped, pierced brackets decorate the upper supports
- Attractive fretwork in Chinoiserie taste graces the lower tier

Search [London Fine for #18.6636](#) , or scan the QR code for more photos and details

DIMENSIONS

Max Width: 56.5cm (22.25")

Max Depth: 40cm (15.75")

Max Height: 77cm (30.25")

LIST PRICE

£895.00

