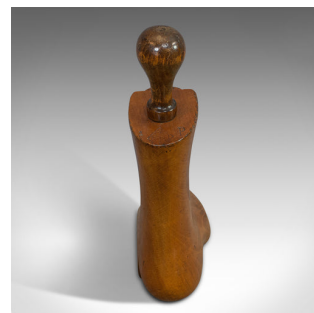
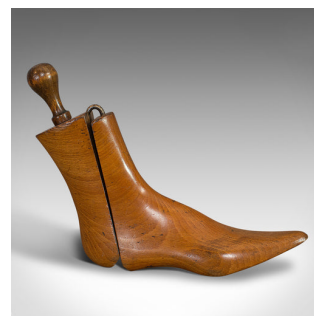


Pair Of Antique Shoe Lasts, English, Beech, Shoemaker's Last, Edwardian, 1910



DESCRIPTION

Our Stock # 18.6586

This is a pair of antique shoe lasts. An English, beech shoemaker's last, dating to the Edwardian period of the early 20th century, circa 1910.

- An elegant, unusual collectible item or craft tool
- Displays a desirable aged patina
- Beech shows appealing grain interest and rich caramel hues
- Ideal for shoemakers or bespoke cordwainers
- Conforms to the dimensions for Size 8 UK/9 US/41-42 EU
- Heel section lifts upon iron rail hinges
 - Tapering heel knob sits above the beech leaf mark associated with Behrens of Manchester
- Also marked with P 1 to the left last and 1 P to the right

This is a pair of antique shoe lasts with wonderful grain interest. Delivered polished and ready for display.

Search [London Fine for #18.6586](#) , or scan the QR code for more photos and details

DIMENSIONS

Max Width: 7.5cm (3")
 Max Depth: 31.5cm (12.5")
 Max Height: 24cm (9.5")

LIST PRICE

£295.00

