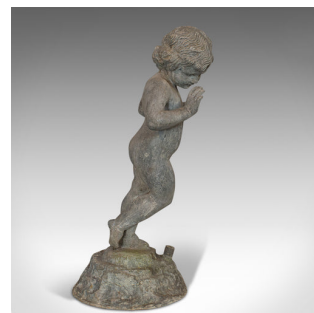
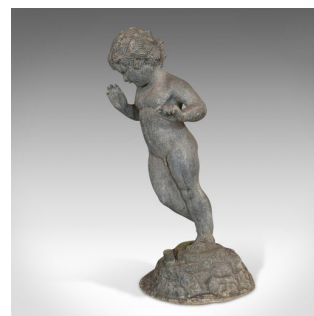
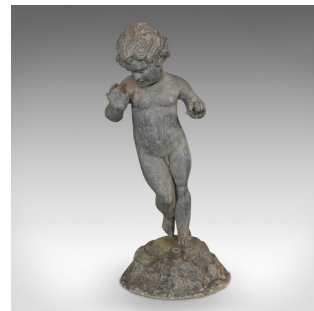


Antique Cherub, English, Lead, Putto, Statue, Ornamental Garden, Victorian, 1900



DESCRIPTION

Our Stock # 18.6501

This is an antique cherub. An English, lead putto statue, ideal for an ornamental garden, dating to the late Victorian period, circa 1900.

- A wonderfully substantial statue
- Displays a desirable aged patina
- Cast in lead, with skilled, fine definition
- Weighs a reassuring 19kg (41.9lb)
- A characterful set of facial features present, beneath a bouffant of hair
- Standing in a classical contraposto pose
- Domed base with hose attachment and spout to the underside
- Well suited for placement within an ornamental garden

This is a fantastic antique cherub, with considerable heft and set to grace any outdoor space. Solid construction, delivered ready for the home.

Search [London Fine for #18.6501](#) , or scan the QR code for more photos and details

DIMENSIONS

Max Width: 24cm (9.5")

Max Depth: 23cm (9")

Max Height: 54cm (21.25")

