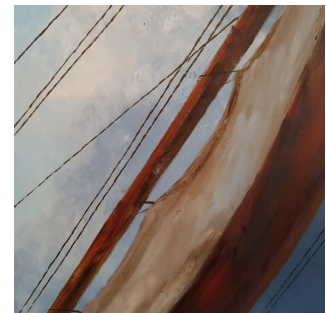




Framed Dramatic Seascape, Oil Painting, Marine, Ship, Storm, Art, Original



DESCRIPTION

Our Stock # 18.6281

This is a framed, dramatic maritime oil painting by the renowned marine and equine artist David Chambers. 'Toil' is an original, oil on board painting from David's recent collection.

So many, so often will have been faced with conditions such as these whilst at sea, especially when working vessels were modest, sailing yachts. The efforts required by the crews of such ships to try and get home to the shore safely is a testament to the hard work of those who make their living from the sea. The ship's crew brace against the hull as it lists to one side within an excitable, cobalt and aqua blue sea. The gathering storm is doing its best to blot out the calm sky, whilst some gulls fly freely to the left of the frame.

Worldwide, David's work provides collectors with excellent investment potential. His mastery of the subject dictates that the classic 'Turneresque' nature of his craft will be sought-after for generations to come. Each painting is signed by the artist for authenticity.

Delivered as a ready to display original, resplendent in a quality, stylish frame and supplied with mountings. This is a fantastic opportunity to own one of David's originals and enhance any space within the home.

DIMENSIONS

Framed Width: 107cm (42.25")

Framed Height: 81.5cm (32")

Find out more about David Chambers here...

LIST PRICE

£1,595.00



Search [London Fine for #18.6281](#), or scan the QR code for more photos and details

+44 (0) 207 1833 511

London Fine Ltd
The Antique Village
The Old Whiteways Cider Factory
Hele, Devon, EX5 4PW

sales@londonfine.co.uk
E. & O. E.