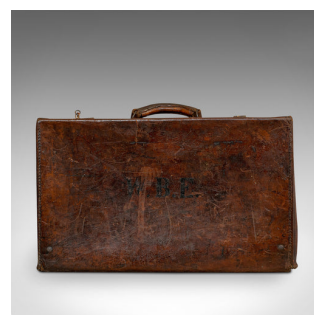


Antique Gentleman's Travel Suitcase, English, Oak, Leather, Edwardian, C.1910



DESCRIPTION

Our Stock # 18.6427

This is an antique gentleman's travel suitcase. An English, leather Edwardian case, dating to the early 20th Century, circa 1910.

- An eye-catching suitcase from the golden age of travel
- Displays a desirable aged patina
- Leather in good order with russet hues
- Case benefits from stitched seam work
- Dressed with bound brass clasps and working slide locks and key
- Thick, rolled leather carry handle to centre
- Interior finished in crisp, white canvas
- Lid personalised with the initials W.B.E.

This is an antique Edwardian gentleman's suitcase. Delivered polished and ready for the home.

Search [London Fine for #18.6427](#) , or scan the QR code for more photos and details



DIMENSIONS

Max Width: 55.5cm (21.75")

Max Depth: 34.5cm (13.5")

Max Height: 14.5cm (5.75")