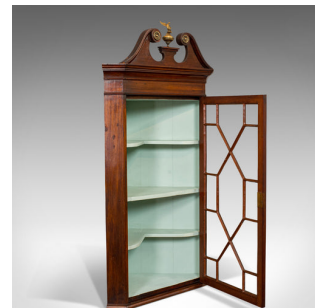


## Antique Corner Cabinet, English, Mahogany, Wall, Georgian, Astragal Glaze, 1790



### DESCRIPTION

Our Stock # 18.6386

This is an antique corner cabinet. An English, mahogany wall hanging Georgian cabinet with astragal glaze door, dating to the late 18th century, circa 1790.

- Appealing Georgian cabinet
- Displays a desirable aged patina
- Mahogany shows fine grain interest
- Glass plate in good order
- Elegant scroll pediment which sets off the ensemble
- Impressive ornamental eagle standing atop a finial
- Tiered crown moulding decorates the fascia
- 13-panel astragal glaze door provides a bright display area to the cabinet
- Working, inset brass-lined lock with key present
- Subtle edge moulding runs along the lower fascia
- Finished with a pair of hanging loops for wall mounting

Search [London Fine for #18.6386](#) , or scan the QR code for more photos and details

### DIMENSIONS

Max Width: 63cm (24.75")

Max Depth: 36.5cm (14.25")

Max Height: 121cm (47.75")

