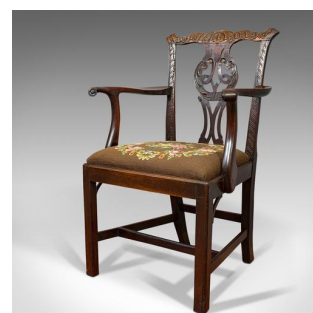
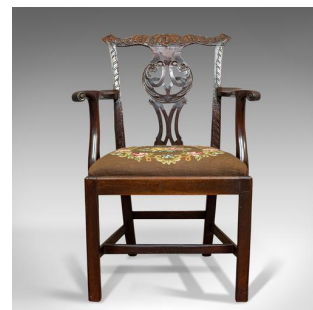


Antique Carver Chair, English, Mahogany, Needlepoint, Elbow, Chippendale Style



DESCRIPTION

Our Stock # 18.6377

This is an antique carver chair. An English, mahogany and needlepoint elbow chair in Chippendale style, dating to the late 18th century, circa 1800.

- Wonderful Georgian carver sure to grace any room
- Displays a desirable aged patina
- Select mahogany with fine grain interest
- Rich hues to the wax polish finish
- Fine acanthus carving to the cresting rail
- Leading into a grand, pierced ribbon back splat
- Sinuous arms host wonderful grain and tonality
- Each arm terminates in a delightful scroll motif
- Quality, foliate needlepoint upholstery in good order
- Drop-in seat cushion at a generous height of 48.5cm (19")
- Raised upon square section legs, gently arching to the rear

Search [London Fine for #18.6377](#) , or scan the QR code for more photos and details

DIMENSIONS

Max Width: 64cm (25.25")
 Max Depth: 53.5cm (21")
 Max Height: 95cm (37.5")
 Seat Width: 48cm (19")
 Seat Depth: 45cm (17.75")
 Seat Height: 48.5cm (19")

LIST PRICE

£725.00

