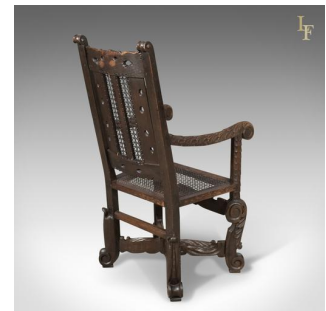


Antique Armchair, Victorian Carved Side, Hall, Bergere, English, Oak, Circa 1880



DESCRIPTION

Our Stock # 12.1763

This is an antique armchair, a Victorian carved side or hall chair in English oak dating to circa 1880.

- Profusely carved displaying the Victorian propensity for excess
- Extraordinary scrolled feet to acanthus leaf spurs
- United by a scroll carved 'X' stretcher and a decorative front stretcher
- Foliate adorned supports rise to shaped and carved armrests
- Terminating in large scrolled grips
- Cane seat in good order and at a generous, comfortable height
- The pierced, carved crest rail centres on a plain cartouche
- The caned splat in good order mounted in a floral and foliate carved frame
- Of quality craftsmanship displaying good colour and a desirable aged patina

A statement piece for any hallway. Solid joints and construction, delivered waxed, polished and ready for the home.

Search [London Fine for #12.1763](#) , or scan the QR code for more photos and details

DIMENSIONS

Max Width: 64cm (25.25")
 Max Depth: 56cm (22")
 Max Height: 119cm (46.75")
 Seat Width: 46cm (18")
 Seat Depth: 41cm (16.25")
 Seat Height: 48cm (19")

