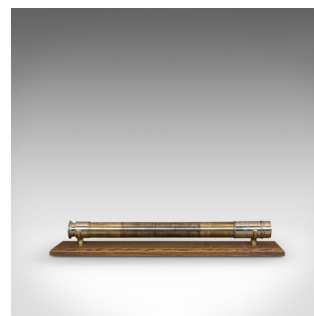


## Antique Marine Telescope, English, Single Draw, Ship, Refractor, Victorian



## DESCRIPTION

Our Stock # 18.6333

This is an antique marine telescope. An English, silvered brass single draw 'officer of the watch' ship's refractor with personal inscription, dating to the late Victorian period, circa 1895.

Perfect for bird watching, landscape appreciation, wildlife stalking, or maritime observation. Equally suitable for observing the night sky.

- Well presented with a fascinating personal inscription
- Displays a desirable aged patina
- Silvered brass with an appealing, textured barrel finish
- Wonderful engraved message from a captain to his apprentice dated August 1896

- Inscription reads thus; August 1896
- To Captain George E.W. Ragner from his old master
- E. J. Essenloope "Sunrise" R. Y. S.

- Single draw telescope operates with smooth action

## DIMENSIONS

Closed Length: 44.5cm (17.5")

Drawn Length: 63cm (24.75")

Objective Diameter: 2.5cm (1")



Search [London Fine for #18.6333](#), or scan the QR code for more photos and details