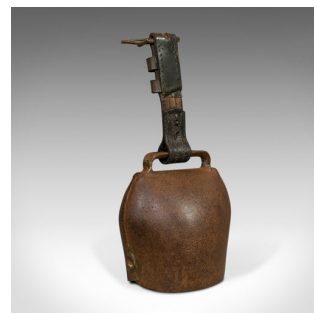
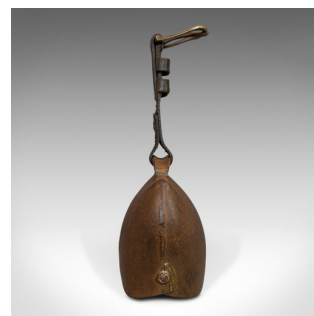
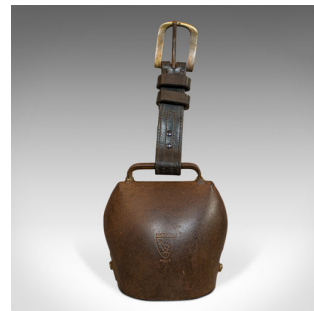


Vintage Bell, Swiss, Tin, Leather, Grade 7, Trychel, Cowbell, Cloche, Firmann



DESCRIPTION

Our Stock # 18.6356

This is a vintage bell. A Swiss, tin and leather 'Grade 7' trychel cow bell or cloche by Ateliers Firmann, dating to circa 1950.

- Classic Alpine cloche
- Displays a desirable aged patina - weathered tin in dark russet hues
- Rings with an evocative, euphonious timbre - an aid to locate herds in period
- Generous leather strap with press-stud loop and brass buckle in good order
- Bears the maker's mark of Firmann, the distinctive goat logo and hometown of Bulle
- Ateliers Firmann continue to craft such bells from their base near Gruyères

This is an appealing vintage Swiss bell. Delivered ready for the home or garden.

Search [London Fine for #18.6356](#), or scan the QR code for more photos and details

DIMENSIONS

Max Width: 17cm (6.75")

Max Depth: 10.5cm (4.25")

Max Height Inc. Buckle: 38cm (15")

