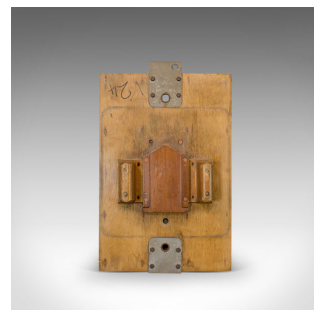


Vintage Decorative Mould, English, Mahogany, Factory, Pattern Part, Wall Hanging



DESCRIPTION

Our Stock # 18.6203

This is a vintage decorative mould. An English, mahogany and other wood factory pattern part, ideal for wall hanging and dating to the 20th century.

- Of unusual, industrial chic
- Displays a desirable aged patina commensurate with age
- Mahogany displays fine grain interest
- Shows factory related marks and labels
- Well suited to wall mounting, either decorative as a mount for various racks or items

This is an appealing, vintage decorative mould. Delivered polished and ready for the home.

Search [London Fine for #18.6203](#) , or scan the QR code for more photos and details

DIMENSIONS

Max Width: 35.5cm (14")

Max Depth: 16cm (6.25")

Max Height: 57.5cm (22.75")

LIST PRICE

£295.00

