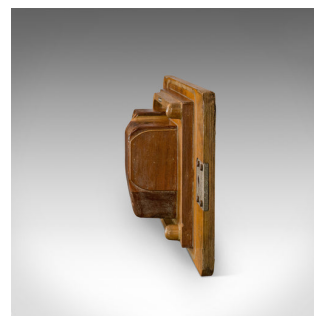
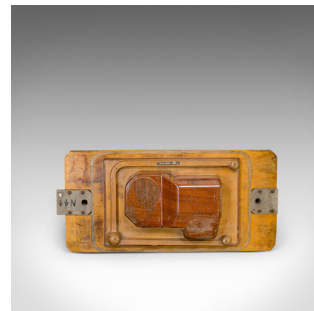


## Vintage Factory Pattern, English, Mahogany, Industrial, Mould, Wall, Decorative



### DESCRIPTION

Our Stock # 18.6197

This is a vintage factory pattern. An English, mahogany and other wood industrial mould ideal for wall hanging or decorative purposes and dating to the 20th century.

- Fascinating industrial chic
- Displays a desirable aged patina
- Mahogany shows grain interest and good colour
- Marked with factory stamps and labels, including the Lumonics laser production brand
- Could be hung for decorative purposes

This vintage factory pattern is an appealing, unusual collectible for those with an engineering mind. Delivered polished and ready for the home.

Search [London Fine for #18.6197](#) , or scan the QR code for more photos and details

### DIMENSIONS

Max Width: 76.5cm (30")

Max Depth: 15cm (6")

Max Height: 36cm (14.25")

### LIST PRICE

£325.00

