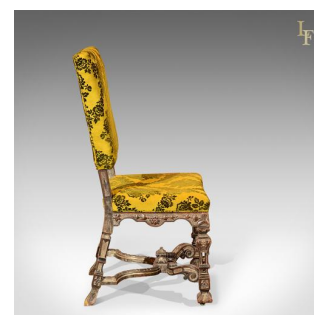


Antique French Side Chair c.1900

**DESCRIPTION**

Our Stock # 10.1264

This is an antique, French side chair dating to c.1900.

The heavily carved frame displays gothic overtones in the serpentine seat rails, square section baluster legs and extravagant 'X' frame stretcher topped with inverted carved finial. The front legs are pierced in the mid section, decorated in foliate detail and terminate in flared bulbous form enclosing hidden solid brass castors.

The rear swept legs add stability and continue the heavily carved theme. The finish has a silvered undertone adding to the interest of the piece and elevating the desirability of this chair.

The seat is strongly webbed with quality upholstery and, along with the back panel, finished in a rich golden damask style cloth decorated in classical floral design.

A statement piece ideal for the hall, delivered ready for the home.

Search [London Fine for #10.1264](#) , or scan the QR code for more photos and details

DIMENSIONS

Max Width: 56cm (22")

Max Depth: 59cm (23.25")

Max Height: 115cm (45.25")

Seat Width: 56cm (22")

Seat Depth: 43cm (17")

Seat Height: 52cm (20.5")

