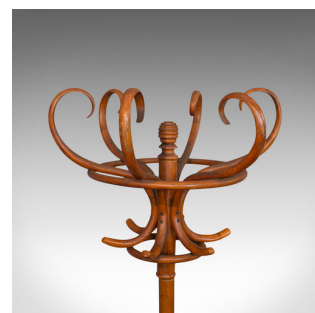
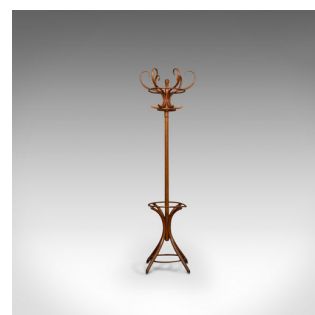
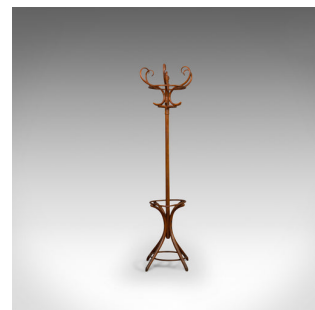
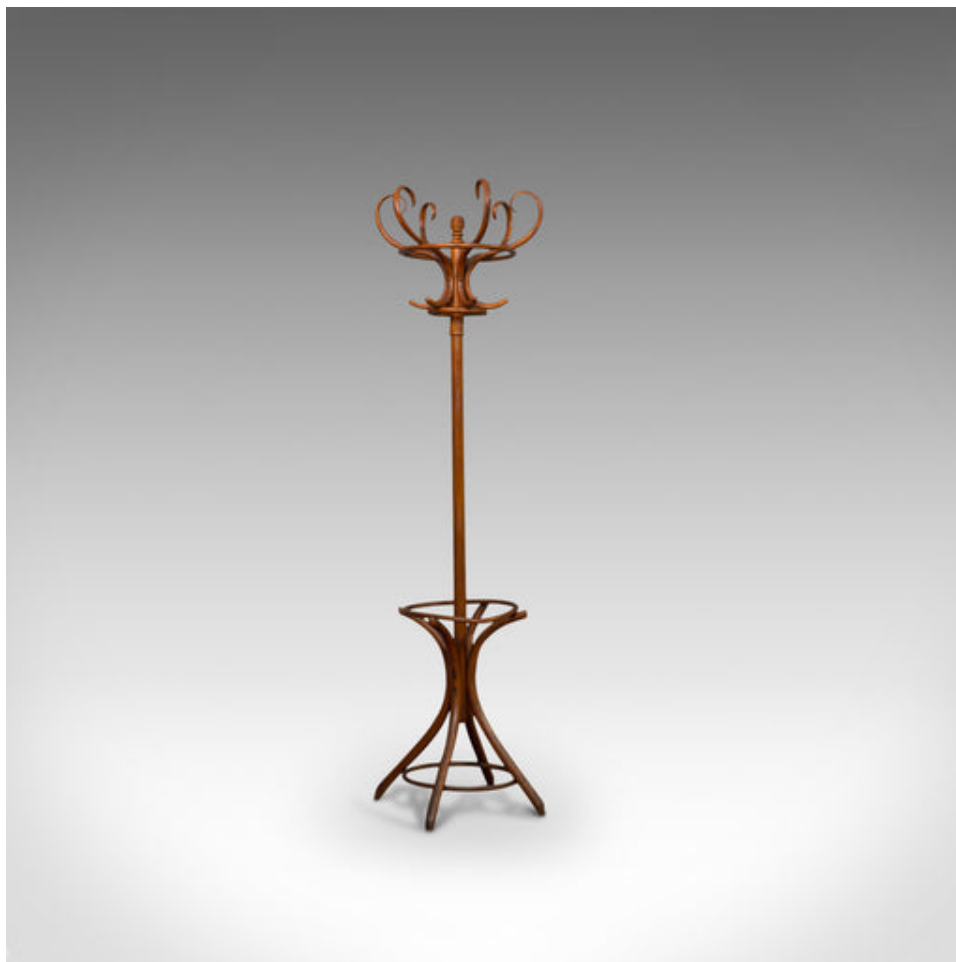


## Antique Bentwood Coat Rack, Hall Stand, English, Beech, Umbrella, Edwardian



## DESCRIPTION

Our Stock # 18.6175

This is an antique bentwood coat rack or hall stand. An English, beech hat, coat, stick or umbrella stand, and dating to the Edwardian period, circa 1910.

- Displays good colour throughout and a desirable aged patina
- Six sinuous 'S' curved rails provide ample hanging for coats and hats
- A continuous hoop sited at the base for umbrella or stick storage
- Stick hoop diameter of 33cm (13")
- Raised upon four out-swept legs with pointed feet

This is an antique bentwood coat rack with an abundance of country house charm. Solid joints and construction, delivered waxed, polished and ready for the home.

Search [London Fine for #18.6175](#) , or scan the QR code for more photos and details

## DIMENSIONS

Max Width: 48.5cm (19")

Max Depth: 54.5cm (21.5")

Max Height: 194.5cm (76.5")

