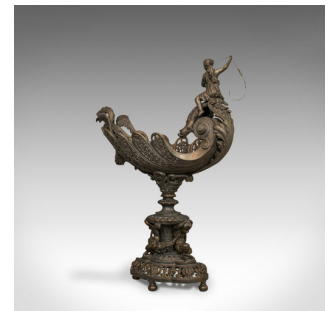


Antique Centrepiece, Classical Taste, French, Bronze Spelter, Bowl, Victorian



DESCRIPTION

Our Stock # 18.6160

This is an antique centrepiece in classical taste. A French, bronze spelter fruit or serving bowl and dating to the Victorian period of the late 19th century, circa 1890.

- Of highly impressive classical form - a conversation starter centrepiece
- Displaying a desirable aged patina
- Spelter presents very well with good, consistent colour and tones
- A figural character sits stridently above the bowl with a fine lasso in hand
- Elegant, broad-leaf serving bowl with floral motif
- A proud griffin features at the prow of the bowl
- Supported by a squat baluster stem, with beading and further adornment
- Raised upon a highly decorated base - testament to the craftsmanship throughout
- A pair of fauns sit as if to hold the whole ensemble upright

This antique centrepiece is a wondrous example of classical taste, French tableware. Delivered ready for the home.

Search [London Fine for #18.6160](#), or scan the QR code for more photos and details

DIMENSIONS

Max Width: 43cm (17")
 Max Depth: 22.5cm (8.75")
 Max Height: 51cm (20")
 Serving Bowl Width: 31cm (12.25")
 Serving Bowl Depth: 20.5cm (8")
 Serving Bowl Height: 9cm (3.5")

