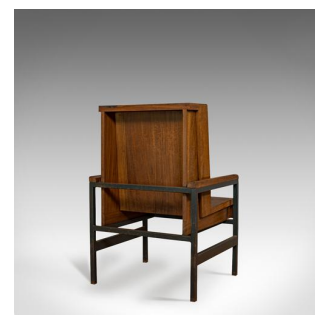
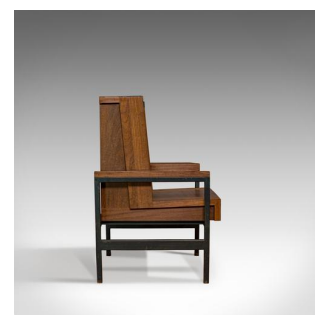




## Vintage Arm Chair, English, Teak, Wing-back, Seat, Modernist Taste, 20th Century



### DESCRIPTION

Our Stock # 18.5953

This is a vintage arm chair. An English, teak wing-back seat in modernist taste and dating to the 20th century.

- Displays a desirable aged patina, slight marks commensurate with age and use
- Select cuts of solid teak show wonderful tonality to the wax polish finish
- Fine grain interest and rich, consistent hues throughout
  
- Strong, mid-century modernist taste
- Seat depth of 44cm (17.25") and a height of 42cm (16.5")
  - Raised upon a sturdy frame with square section feet and braced with a pair of stretchers

This is a vintage arm chair with distinctive taste. Solid joints and construction, delivered waxed, polished and ready for the home.

Search [London Fine for #18.5953](#) , or scan the QR code for more photos and details

### DIMENSIONS

Max Width: 61cm (24")  
Max Depth: 62.5cm (24.5")  
Max Height: 94cm (37")

### LIST PRICE

£685.00

