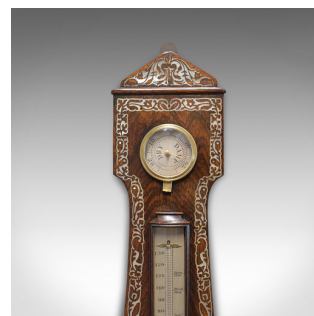
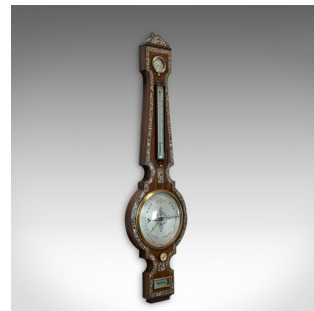


## Antique Banjo Barometer, English, Rosewood, Mother of Pearl, Victorian, C.1900



### DESCRIPTION

Our Stock # 18.5642

This is an antique banjo barometer. An English, rosewood and mother of pearl barometer dating to the Victorian period in the late 19th century, circa 1900.

- Select rosewood displays wonderful grain interest and a desirable aged patina
- Profusely decorated with beautiful mother of pearl inlay, in good order
- An inlaid pediment features at the apex of the barometer
- Bow-fronted, silvered face with attractive annotations
- Secondary hand for setting the change in conditions
- Clear, bright glass adds to the appearance with a diameter of 19cm (7.5")
- Silvered dry/damp scale showing atmospheric conditions
- Long drop temperature scale displays in Fahrenheit
- Warranted Correct spirit level features at the base, to aid alignment

Search [London Fine for #18.5642](#) , or scan the QR code for more photos and details

### DIMENSIONS

Max Width: 26cm (10.25")

Max Depth: 5.5cm (2.25")

Max Height: 100cm (39.25")

