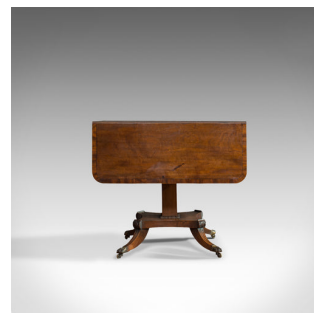
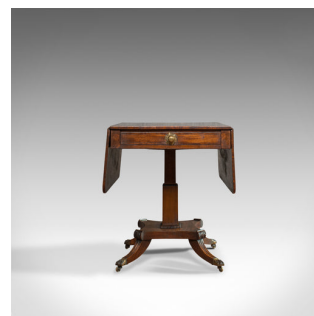
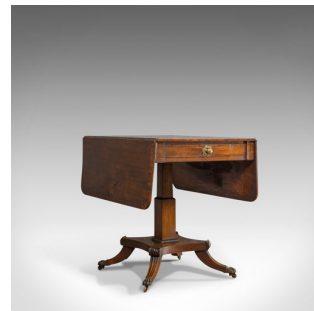


Antique Pembroke Table, English, Mahogany, Drop Leaf, Occasional, Regency



DESCRIPTION

Our Stock #13.0720

This is an antique Pembroke table. An English, mahogany drop-leaf occasional table dating to the Regency period, circa 1830.

- Select mahogany displays fine grain interest and a desirable aged patina
- Good consistent colour throughout to its wax polished finish
- Of good proportion - width doubles when extended
- Frieze drawer to the front, with a faux drawer on the reverse
- Dressed with brass, sunburst pulls to both sides
- Leaves supported by large, shaped elbows, smooth in their operation
- Raised on a stout, tiered square pillar within beaded collars
- Short, squat cabriole legs with carved knees
- Riding upon the original, solid brass paw castors

Search [London Fine for #13.0720](#) , or scan the QR code for more photos and details

DIMENSIONS

Max Width: 123cm (48.5")

Max Depth: 61cm (24")

Max Height: 74.5cm (29.25")

Dropped Width: 61cm (24")

