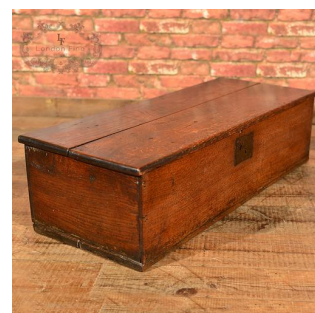
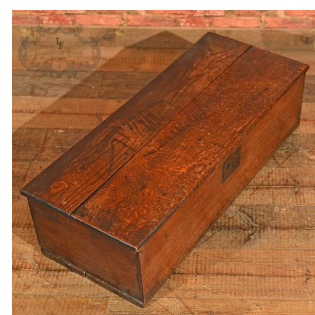




## Georgian Carriage Document Box



### DESCRIPTION

Our Stock # LFA-1250 This is an antique, Georgian carriage chest dating to the mid 18th Century. The robust construction sings with an aged patina in the deep russet brown hues of the English oak boards. The lid lifts on hand forged iron strap hinges to reveal modest storage for document scrolls or alike and is fitted with a small candle box to one end. Full of character and ideal for placement at the end of a bed or as a low table, the box comes waxed, polished and ready for the home.

Search [London Fine for #LFA-1250](#) or scan the QR code for more photos and details

### DIMENSIONS

Max Width: 92cm (36.25")

Max Depth: 37cm (14.5")

Max Height: 25cm (9.75")

