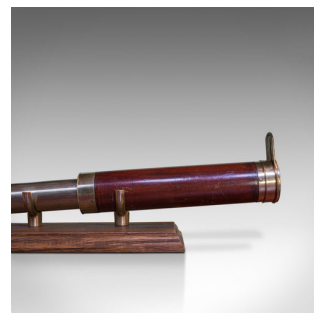
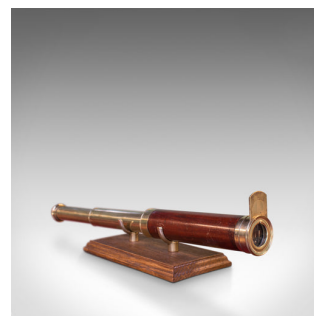
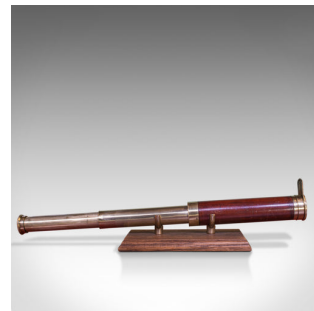


## Antique Telescope, 2 Draw Refractor, English, Georgian, 18th Century, Circa 1800



### DESCRIPTION

Our Stock # 18.6056

This is an antique telescope, a two draw refractor for terrestrial or astronomical use. An English, late Georgian piece dating to circa 1800.

Perfect for bird watching, landscape appreciation, wildlife stalking, or maritime observation. Equally suitable for observing the night sky.

- Good optics presenting a clear, sharp performance
- Parallel, primary barrel presents well
- Draw tubes in good order with smooth action
- Supplied with a London Fine oak and brass 'Captain's Stand' for display.
- Flared eyecup with sliding cover
- Segmented draw tube
- 25mm (1") achromatic objective
- Sliding dust cover to objective

A fine antique telescope, an historic, period piece as good to use today as it was two hundred years ago.

Search [London Fine for #18.6056](#), or scan the QR code for more photos and details

### DIMENSIONS

Closed Length: 20cm (7.75")

Fully Drawn Length: 46cm (18")

Objective Glass Diameter: 25mm (1")

