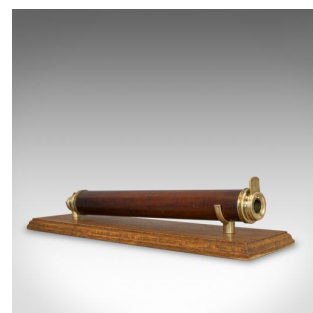
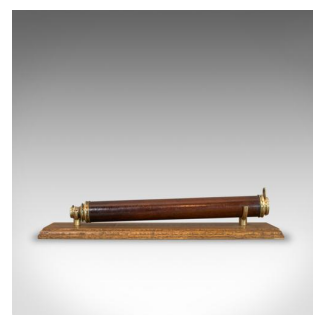
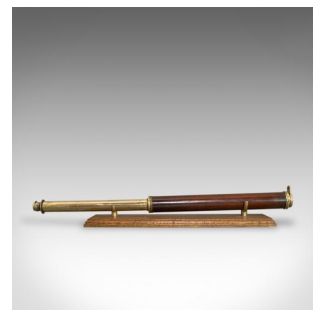


Antique Telescope, Single Draw, Terrestrial, Astronomical, Georgian Circa 1760

**DESCRIPTION**

Our Stock # 18.6060

This is an antique telescope, a single draw refractor for terrestrial or astronomical use. An English, Georgian piece dating to circa 1760.

Perfect for bird watching, landscape appreciation, wildlife stalking, or maritime observation. Equally suitable for observing the night sky.

- Tapered, fruitwood primary barrel presents well
- Single brass draw tube in good order with smooth action
- Supplied with a London Fine, oak and brass 'Captain's Stand' for display.
- 20mm (0.75") objective lens with sliding dust cover
- Bulbous eyecup with sliding dust cover
- Segmented brass draw tube

A super example of a Georgian antique telescope. An historic, period piece that is good to use today as it was 250 years ago.

Search [London Fine for #18.6060](#), or scan the QR code for more photos and details

DIMENSIONS

Closed Length: 34cm (13.5")

Fully Drawn Length: 57.5cm (22.75")

Objective Glass Diameter: 20mm (0.75")

LIST PRICE

£725.00

