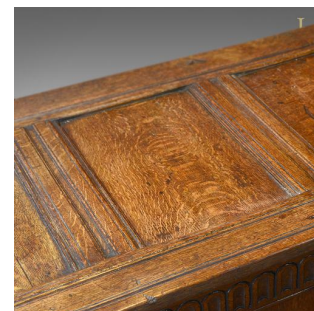
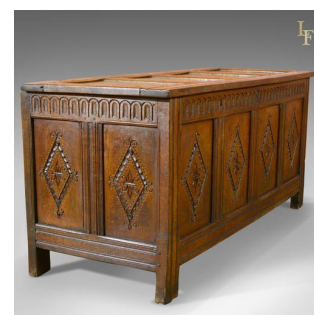


Antique Coffe, Charles II Chest c.1680



DESCRIPTION

Our Stock # 10.1194

This is an antique coffer from the reign of Charles II dating to c.1680.

A fine example well carved in English oak, this piece features a quadruple panel top mirrored to the front and rear and complimented by double panelled ends. A typical carved frieze surmounts the vertical field panels decorated by the deep carving, typical of the period, displaying geometric form.

The lid, with scribed edge detail, lifts on staple hinges offering generous storage within.

The original outer iron locks are present without a key. The back panels are plain with hand chamfering to the panels with joints pegged for strength.

Superb period charm and in good antique order, this piece is delivered waxed and polished ready for the home.

Search [London Fine for #10.1194](#), or scan the QR code for more photos and details

DIMENSIONS

Max Width: 150cm (59")

Max Depth: 61cm (24")

Max Height: 73cm (28.75")

LIST PRICE

£1,950.00

