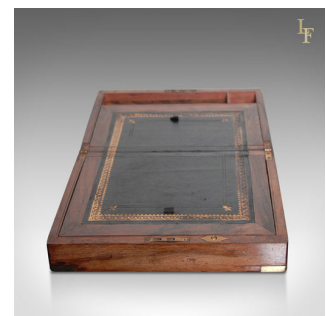


Late Georgian Antique Writing Slope



DESCRIPTION

Our Stock # LFA1059

This is an English antique writing slope dating to c.1810. In good antique condition this writing slope retains the original working lock and key. The lid is decorated by a blank, shield-shaped, brass cartouche mirroring the lock escutcheon. Both are set into the walnut box-work that is beautifully bound by brass corners and strapping. Opening the box reveals fine figuring to the wood grain surrounding the writing slope which is fitted with a leather skiver framed by an intricate gold embossed border. To the rear of the slope is a removable quill tray with storage under. Both the upper and lower parts of the slope raise to reveal hidden document compartments beneath. Supplied in excellent antique condition, delivered waxed and polished ready for display in the home.

Search [London Fine](#) for #LFA-1059 or scan the QR code for more photos and details

DIMENSIONS

Max Width: 30cm (11.75")

Max Depth: 23cm (9")

Max Height: 15cm (6")

