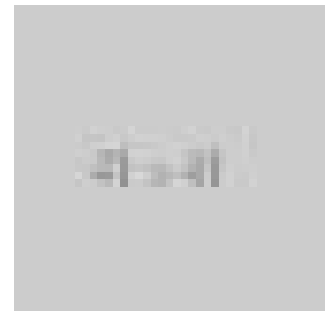
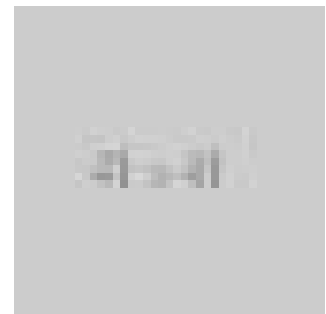




Georgian Chest of Drawers



DESCRIPTION

Our Stock # LFA-1132 This is an antique mahogany chest of drawers dating to the late Georgian period c.1800. Mid-sized and beautifully proportioned in a '2 over 2' configuration, this chest stands on classic, tall bracket feet with swagged apron. The mahogany has a warm, honey hue and features a wide crossband to the top surface. The oak lined drawers are well made with quality dovetail joints, original cock beading, inset brass lock escutcheons, working locks and Sheraton stepped oval handles set off with pressed floral motif to the centres. Superb quality and a stunning piece presented in good antique condition. Solid joints and construction. Delivered waxed & polished ready for the home.

Search [London Fine for #LFA-1132](#) or scan the QR code for more photos and details

DIMENSIONS

Max Width: 107cm (42.25") Max Depth: 53cm (20.75") Max Height: 86cm (33.75")

