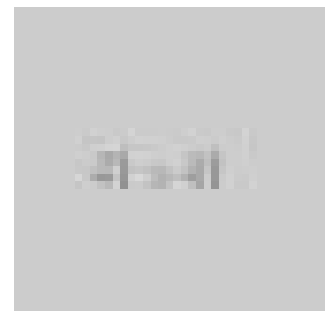
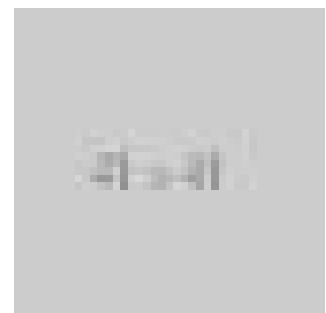
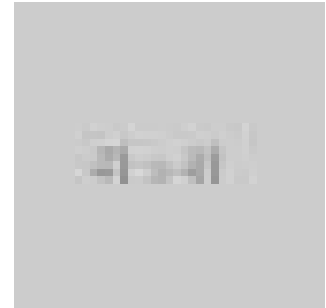




Antique Oak Smokers Cabinet, Locking Specimen Case, English Edwardian Treen



DESCRIPTION

Stock # LFA1066 This is an antique, Edwardian oak smokers cabinet c.1910 complete with key and working lock. Sat upon chamfered plinth and beautifully crafted from English oak, this locking cabinet features a hinged lid over twin doors with original bevelled glass field panels and brass furniture. Opening the doors, the hinged lid is released opening the cabinet fully for access to the pair of double pipe racks above twin drawers complete with bone turned handles. These flank the central turned original tobacco jar which, in itself is a delightful treen object. Skilfully turned from a single blank the flush fitting lid features subtle concentric relief turning terminating in a bobbin knob. A lower storage section completes this delightfully symmetrical cabinet that is truly a delight in small scale cabinet making. Delivered waxed and polished ready for display.

Search [London Fine](#) for #LFA-1066 or scan the QR code for more photos and details

DIMENSIONS

Max Width: 35cm (13.75")
Max Depth: 18cm (7")
Max Height: 31cm (12.25")

