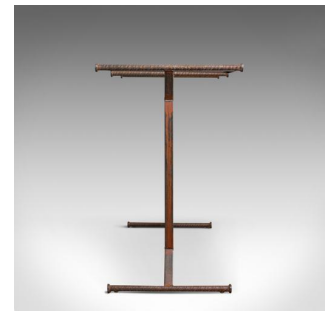
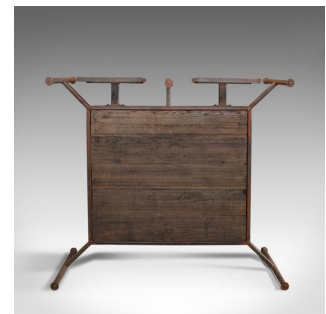
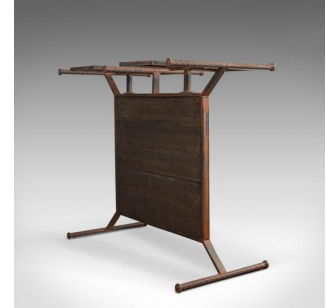


Vintage Clothes Rail, English, Steel, Oak, Retail, Shopfitting, 20th Century



DESCRIPTION

Our Stock # 18.6047

This is a vintage clothes rail. An English steel and oak retail shopfitting in industrial taste and dating to the 20th century.

- Desirably aged steel and oak with fine grain interest
- Strong industrial taste with colouration and dark staining
- A suite of three hanging rails complimented by two mesh display surfaces
- Raised upon two stout feet for stability

This is a strong example of industrial taste and well suited to retail or display use. Solid joints and construction, delivered polished and ready for commercial use.

Search [London Fine for #18.6047](#) , or scan the QR code for more photos and details

DIMENSIONS

Max Width: 80.5cm (31.75")

Max Depth: 145cm (57")

Max Height: 130cm (51.25")

LIST PRICE

£845.00

