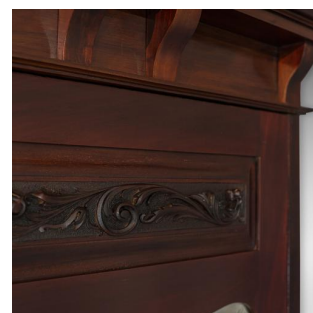
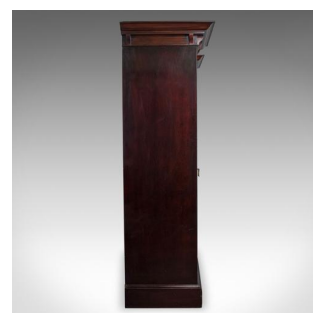
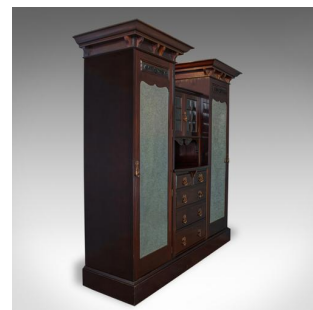


Antique Wardrobe, Maple and Co, English, Mahogany, Victorian, Art Nouveau
C.1880



DESCRIPTION

Our Stock # 18.5930

This is an antique mirrored wardrobe by Maple and Co. An English, Victorian mahogany cabinet in Art Nouveau taste dating to the late 19th century, circa 1880.

- Select cuts of mahogany display a rich, consistent colour throughout
- Shows fine grain interest and a desirable aged patina
- Bevelled mirror plates in wonderful original condition with a light foxing
- Bearing the maker's mark; 'From Maple and Co Limited, London & Paris'
- Grand crown mouldings stand above each side of the wardrobe
- A field panel with foliate motif adorns each door
- Large mirrored doors flank an upper bulbous-glazed cabinet over mirror-back recess
- Over a suite of five graduated drawers arranged '2 over 3'
- Bright brass lock escutcheons and drop handles, working locks, key present
- Hanging rails and an upper shelf feature within each wardrobe
- Each drawer is crafted with fine dovetail joints

Search [London Fine for #18.5930](#) , or scan the QR code for more photos and details

DIMENSIONS

Max Width: 218cm (85.75")

Max Depth: 70cm (27.5")

Max Height: 221cm (87")

LIST PRICE

£2,850.00

