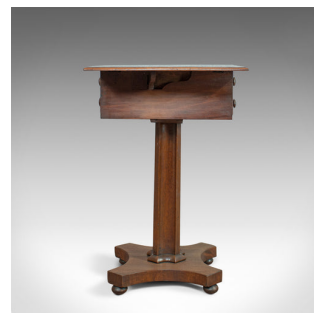
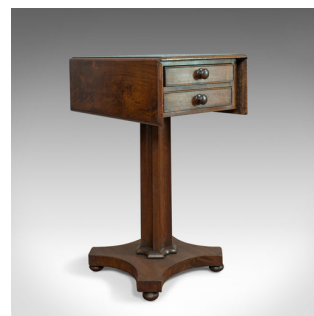


Antique Pembroke Work Table, English, Victorian, Flame Mahogany, Drop Flap c1840



DESCRIPTION

Our Stock # 18.5946

This is an antique Pembroke work table. An English, early Victorian, flame mahogany, drop-flap side table dating to the early 19th century, circa 1840.

- Fabulous grain detail to the flame mahogany top
- Displaying biscuit and caramel hues and a desirable aged patina
- In good proportion, compact in size with fall flaps supported by swing arms
- A pair of frieze drawers offer useful storage space
- A pair of faux drawer fronts to the other end, all dressed with turned pulls
- Raised on an appealing, large fluted stem anchored in a carved collar
- Standing upon a hyperboloid platform over four bun feet

An attractive and desirable antique Pembroke work table. Solid joints and construction, delivered waxed, polished and ready for the home.

Search [London Fine for #18.5946](#) , or scan the QR code for more photos and details

DIMENSIONS

Width: 36.5cm (14.25")
Width Extended: 70cm (27.5")
Max Depth: 48.5cm (19")
Max Height: 75cm (29.5")

