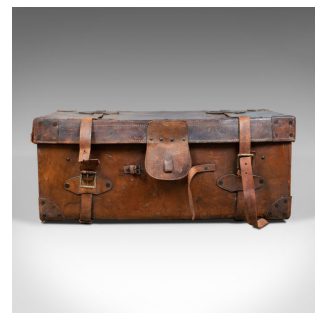


Large Antique Steamer Trunk, English, Edwardian, Leather, Travel Case Circa 1910



DESCRIPTION

Our Stock # 18.5905

This is a large antique steamer trunk. An English, Edwardian, leather travelling case dating to the early 20th century, circa 1910.

- Huge character and appeal
- Aged leather displaying desirable patina
- Wear commensurate with age and use, some torn straps
- Catch-plate clasp absent
- Large and sturdy, would make a great side or coffee table
- Featuring straps and buckles with carry handles to ends
- Lid lifts to reveal English green lining, pouch to inside lid
- Owner's initials 'S.J.W.' to one end
- Original wooden skids and rollers to the bottom

A fascinating antique steamer trunk, delivered waxed, polished and ready for the home.

Search [London Fine for #18.5905](#) , or scan the QR code for more photos and details

DIMENSIONS

Max Width: 88cm (34.75")

Max Depth: 52cm (20.5")

Max Height: 37cm (14.5")

