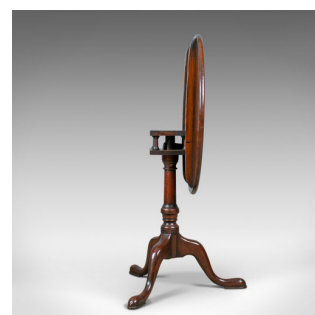


Antique Tilt-Top Side Table, English, Georgian, Mahogany, Wine, Circa 1800



DESCRIPTION

Our Stock # 18.5900

This is an antique tilt-top side table. An English, Georgian, mahogany wine table dating to the early 19th century, circa 1800.

- Appealing patina and grain interest in the select mahogany
- Good colour depth shining through the wax polished finish
- Good proportions ideal as a lamp or side table
- Raised on a stout, barrel turned column
- Top mounted on a 'birdcage' platform allowing rotation
- Brass catch locking down the tilt top to a steady platform
- A tripod of cabriole legs splay out to spade feet

A good antique tilt-top wine table with solid joints and construction. Delivered waxed, polished and ready for the home.

Search [London Fine for #18.5900](#) , or scan the QR code for more photos and details

DIMENSIONS

Max Width: 68.5cm (27")

Max Depth: 68.5cm (27")

Max Height: 71.5cm (28.25")

