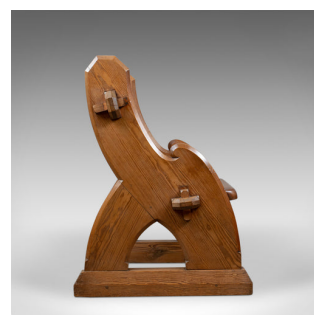
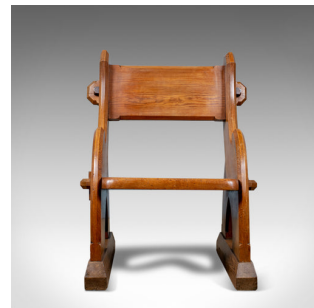


Antique Glastonbury Chair, Tudor Revival, Ecclesiastical, Gothic, Circa 1850



DESCRIPTION

Our Stock # 18.5887

This is an antique Glastonbury chair. An English, Tudor Revival, hall seat with ecclesiastical and gothic overtones, dating to the mid 19th century, circa 1850.

- A fine Glastonbury chair faithful to its origins
- Exhibiting ecclesiastical and gothic overtones
- Classic tusked joints – the 'keys' of wood were designed to be removed to simply disassemble the chair for transportation
- In pitch pine displaying grain interest in a wax polished finish
- Shaped armrests synonymous with the style
- Raised on 'X' frame legs standing upon later shaped block feet
- Raked backrest and solid seat slab offering a very stable perch
- Of quality craftsmanship

A super antique Glastonbury chair with solid joints and construction. Delivered waxed, polished and ready for the home.

Search [London Fine for #18.588Z](#) , or scan the QR code for more photos and details

DIMENSIONS

Max Width: 74cm (29.25")
 Max Depth: 72cm (28.25")
 Max Height: 97cm (38.25")
 Seat Width: 53cm (20.75")
 Seat Depth: 43cm (17")
 Seat Height: 43cm (17")

