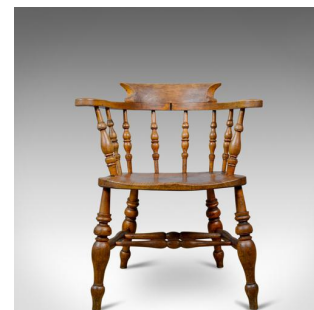


Antique Bow-Back Elbow Chair, English, Victorian, Smokers, Captains, Circa 1890



DESCRIPTION

Our Stock # 18.5873

This is an antique bow-back elbow chair. An English, Victorian, elm, 'smokers', or 'captains', chair dating to circa 1890.

- An appealing country kitchen, bow back armchair
- Grain interest in a wax polished finish
- Solid and stable offering a comfortable seat
- Stamped with the craftsman's initials 'A.M.'
- Scrolled armrests raised on attractively turned spindles
- Deep, shaped crest rail for added back support
- Solid elm slab seat panel with subtle saddling
- Raised on stout turned legs united by double 'H' stretcher

A classic chair from the Victorian, provincial country kitchen. Solid joints and construction, delivered waxed, polished and ready for the home.

Search [London Fine for #18.5873](#), or scan the QR code for more photos and details

DIMENSIONS

Max Width: 66cm (26")
Max Depth: 55cm (21.75")
Max Height: 79cm (31")
Seat Width: 38cm (15")
Seat Depth: 43cm (17")
Seat Height: 43cm (17")

LIST PRICE

£675.00

