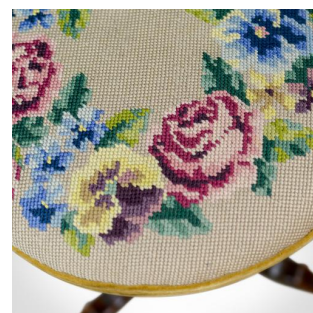
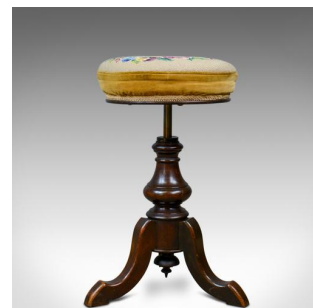


## Adjustable Antique Piano Stool, English, Victorian, Walnut, Music, Circa 1880



### DESCRIPTION

Our Stock # 18.5748

This is an adjustable, antique piano stool. An English, Victorian, walnut music stool with needlepoint tapestry seat pad dating to the latter part of the 19th century, circa 1880.

- Beautifully made in solid walnut with a waxed finish and desirable aged patina
- Raised on a tripod of swept legs terminating in bump toes
- Inverted, turned finial beneath bulbous 'squash' baluster column
- Quality threaded adjustable riser, easy to adjust height
- Traditionally stuffed seat pad with matching brocade trim
- Upholstered in a needlepoint tapestry cloth in good order
- Featuring floral sprays on a sand ground

A super antique piano stool, comfortable and stable. Solid joints and construction, delivered waxed, polished and ready for the home.

Search [London Fine for #18.5748](#) , or scan the QR code for more photos and details

### DIMENSIONS

Max Width: 38cm (15")  
 Max Depth: 38cm (15")  
 Min Height: 50.75cm (20")  
 Max Height: 60cm (23.5")

### LIST PRICE

£495.00

