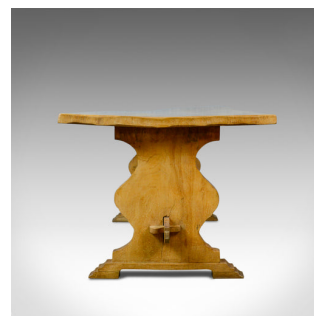


Antique Refectory Dining Table, English, Farmhouse, Elm, Victorian, Circa 1900



DESCRIPTION

Our Stock # 18.5665

This is an antique refectory dining table in the 17th century taste. An English, country kitchen, farmhouse table in elm dating to the late Victorian period circa 1900.

- Seating a comfy four or a cosy six
- Of huge character and robust construction
- Of quality craftsmanship in stout stocks – the top 4.5cm (1.75") thick
- Good colour and grain interest throughout
- Plank top featuring natural edge form
- Vase form trestle ends with broad platform feet
- Large, central waney stretcher
- Traditionally pegged and jointed

A super rustic antique refectory dining table. Solid joints and construction, delivered waxed, polished and ready for the home.

Search [London Fine for #18.5665](#) , or scan the QR code for more photos and details

DIMENSIONS

Max Width: 152.5cm (60")

Max Depth: 93cm (36.5")

Max Height: 76cm (30")

