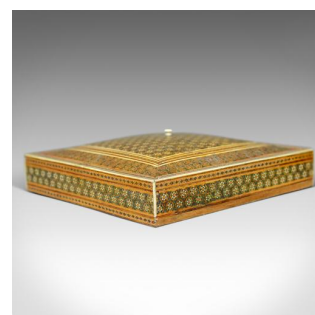


Antique Sadeli Ware Box, Anglo-Indian, Jewellery, Late 19th Century



DESCRIPTION

Our Stock # 18.5829

This is an antique Sadeli ware box. An Anglo-Indian jewellery box dating to the late 19th century, circa 1880.

- Beautifully crafted Sadeli ware box
- Intricate geometric design
- In earth tones
- The domed lid dressed with a turned pull
- Opening to reveal a scarlet red velvet interior
- Ruched to the inside of the lid
-

Replaced lower strip to one side and minor losses

A super example of a Sadeli ware box. Wear commensurate with age and careful use. Ready for the home.

Search [London Fine for #18.5829](#), or scan the QR code for more photos and details

DIMENSIONS

Max Width: 25.5cm (10")

Max Depth: 25.5cm (10")

Max Height: 6cm (2.25")

LIST PRICE

£395.00

