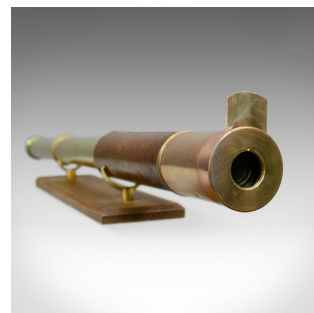


Antique Telescope, Two Draw, Refractor, Stampa and Son, London, Circa 1810



DESCRIPTION

Our Stock # 18.5084

This is an antique telescope, a two draw refractor for terrestrial or astronomical use. An English telescope by Stampa and Son, London dating to the late Georgian period, circa 1810.

Perfect for bird watching, landscape appreciation, wildlife, or maritime observation. Equally suitable for observing the night sky.

- Good optics presenting a clear, sharp performance
- Parallel, leather primary barrel in good order
- Draw tubes in good order, the odd minor depression
- Draws with a firm action and focuses easily
- Engraved Stampa and Son, London, Day or Night
- 38mm, 1.5", achromatic doublet objective lens
- Sun shade slide and lens cap with integral dust slide
- Sliding dust cover to flared eye cup

Supplied with a London Fine oak and brass 'Captain's Stand' for display. An historic, period piece as good to use today as it was two hundred years ago.

DIMENSIONS

Max Width: 37.5cm (14.75")

Max Depth: 97cm (38.25")

Max Height: 3.8cm (1.5")

Find out more about Stampa and Son, London here...



Search [London Fine](#) for #18.5084, or scan the QR code for more photos and details

+44 (0) 207 1833 511

London Fine Ltd
The Antique Village
The Old Whiteways Cider Factory
Hele, Devon, EX5 4PW

sales@londonfine.co.uk
E. & O. E.