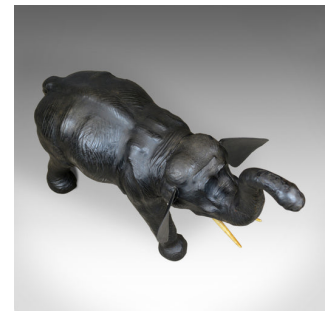
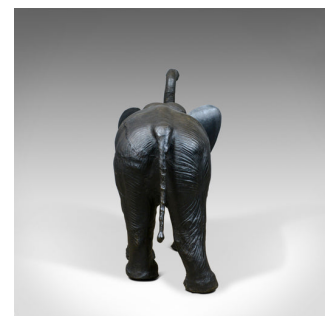


Large Vintage Leather Elephant Sculpture, 3 Foot Tall Model, Mid 20th Century



DESCRIPTION

Our Stock # 18.5827

This is a large, vintage leather elephant sculpture. A three foot tall at trunk (72cm to back) striding elephant model dating to the mid 20th century.

- Superbly modelled and detailed sculpture
- In a quality black leather hide with a desirable patina
- Robust and pleasingly sturdy
- Walking with trunk raised
- Original faux tusks
- Some wear to trunk commensurate with age

Larger than most, an appealing vintage leather elephant sculpture. Solid and stable, ready for the home.

Search [London Fine for #18.5827](#) , or scan the QR code for more photos and details

DIMENSIONS

Max Width: 110cm (43.25")

Max Depth: 40.75cm (16")

Max Height: 91.5cm (36")

LIST PRICE

£1,850.00

