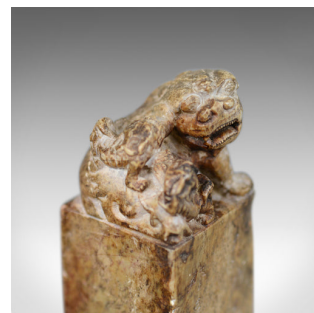
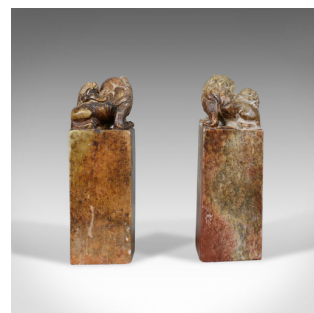
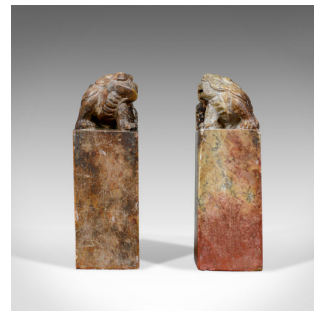


Opposing Pair of Chinese Soapstone Seals, Dogs of Foo, Bookends 20th Century



DESCRIPTION

Our Stock # 18.5796

This is an opposing pair of Chinese soapstone seals surmounted with hand carved 'dogs of Foo' dating to the 20th century.

- Tactile and attractive Chinese soapstone seals
- Block form surmounted by hand carved 'dogs of Foo'
- Hand carved seal decoration to the bases
- Inscribed to the front face of the blocks
- Weighty, decorative pieces
- In warm earthy tones

A good opposing pair of Chinese soapstone seals presented ready for the home.

Search [London Fine for #18.5796](#) , or scan the QR code for more photos and details

DIMENSIONS

Max Width: 5.5cm (2.25")

Max Depth: 5.5cm (2.25")

Max Height: 17cm (6.75")

