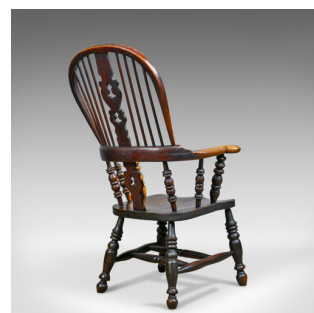


Antique Windsor Broad Arm Elbow Chair, English, Victorian, Elm, Ash, Circa 1850



DESCRIPTION

Our Stock # 18.5800

This is an antique Windsor broad arm elbow chair. An English, Yorkshire, Victorian, elm and ash armchair dating to the mid 19th century, circa 1850.

- Classic English, country, elbow chair
- Delightful colour with a desirable aged patina
- Triple fret-cut back splat all in good proportion
- Raked, bentwood back bow with eight spindles for comfort
- Bow armrest raised on oblique turned spindles
- Generous, elm, saddle seat slab displaying grain interest
- Raised on turned legs united by double 'H' stretcher

A delightful antique Windsor broad arm elbow chair. Solid joints and construction, delivered waxed, polished and ready for the home.

Search [London Fine for #18.5800](#) , or scan the QR code for more photos and details

DIMENSIONS

Max Width: 68.5cm (27")
Max Depth: 61cm (24")
Max Height: 110cm (43.25")
Seat Width: 38cm (15")
Seat Depth: 45.75cm (18")
Seat Height: 40cm (15.75")

