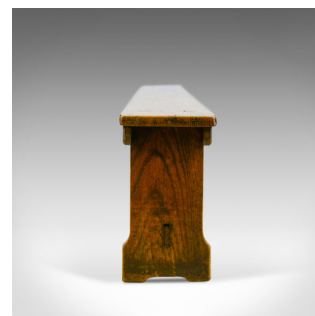


## Antique Tavern Bench, Georgian, English, Oak, Six Seater, Form, C19th, c.1810



### DESCRIPTION

Our Stock # 18.5789

This is an antique tavern bench, a Georgian, English oak, six seater form dating to the early 19th century, circa 1810.

- Attractive grain interest in the stout planked top
- Dark honey hues displaying a desirable aged patina
- Three legs and frieze bars providing added strength
- 

Benefiting from footrest stretcher for comfort

- Traditional shaped legs offer a stable seat
- Through tenon joints so typical of it's type
- Generous seat width and height ideal for kitchen dining

A quality antique tavern bench with solid joints and construction, delivered waxed, polished and ready for the home.

Search [London Fine for #18.5789](#) , or scan the QR code for more photos and details

### DIMENSIONS

Max Width: 244cm (96")

Max Depth: 24cm (9.5")

Max Height: 46.5cm (18.25")

