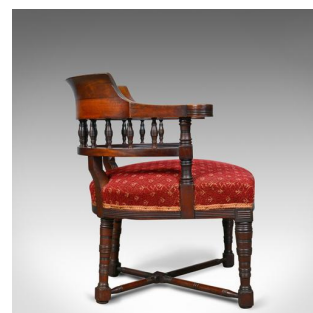
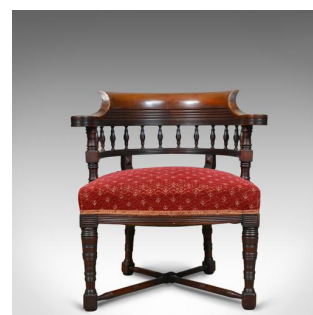
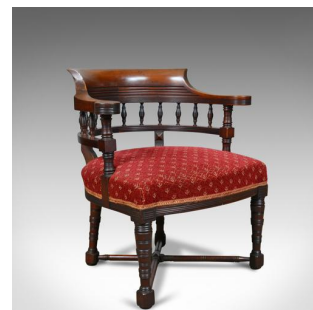


Pair of Antique Salon Chairs, English, Late Victorian, His and Hers, Circa 1900



DESCRIPTION

Our Stock # 18.5726

This is a pair of antique salon chairs. English, late Victorian, 'his and hers' scroll back bedroom armchairs displaying classical overtones and dating to circa 1900.

- Sumptuous broad and plump comfortable seats
- Well sprung and traditionally stuffed
- Finished in a damask cloth in good order for age
- Matching brocade trim and edge detailing
- Walnut frames displaying good colour
- Horseshoe armrests with a raised scrolled back
- Gallery of turned spindles supporting the armrest
- Turned and tapered legs united by an 'X' stretcher

A fine pair of antique salon chairs with solid joints and construction. Delivered waxed, polished and ready for the home.

Search [London Fine for #18.5726](#) , or scan the QR code for more photos and details

DIMENSIONS

- Max Width: 65cm (25.5")
- Max Depth: 61cm (24")
- Max Height 1: 72cm (28.25")
- Max Height 2: 75cm (29.5")
- Seat Width: 47cm (18.5")
- Seat Depth: 53cm (20.75")
- Seat Height 1: 42cm (16.5")
- Seat Height 2: 45cm (17.75")

