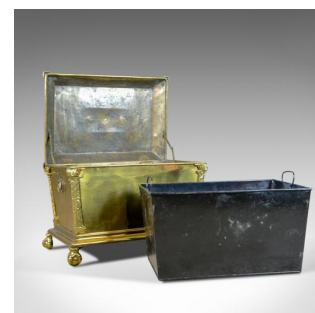


## Antique Log Bin, Brass Fireside Storage Box, Victorian Fireplace Accessories



### DESCRIPTION

Our Stock # 18.5760

This is an antique log bin, a brass fireside storage box for kindling, logs, coal or ash. An English, Victorian fireplace accessory dating to the late 19th century, circa 1880.

- A pleasing, mid-size fireside storage bin in brass
- Of classical form, sarcophagus in shape, standing upon claw and ball feet
- Decorated with classical motif and adornment throughout
- The hinged lid with central platform and well cast finial
- Each corner decorated with a lion mask above column corner plates
- Pressed rosette back-plates with loop handles to the ends
- Hinged lid lifts to reveal voluminous storage
- Removable tin liner with folding handles
- Suitable for coal, kindling or helpful when removing ash

An attractive and useful piece to be welcomed into any fireside location. Delivered ready for the home.

Search [London Fine for #18.5760](#), or scan the QR code for more photos and details

### DIMENSIONS

Max Width: 51cm (20")

Max Depth: 36cm (14.25")

Max Height: 40.75cm (16")

