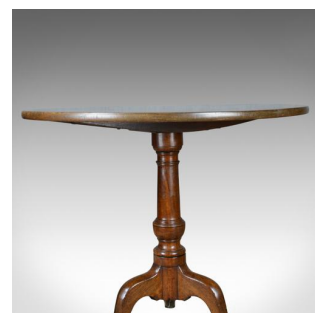
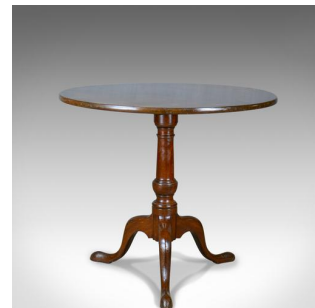


Antique Tilt Top Table, English, Mahogany, Side, Early 19th Century, Circa 1800

**DESCRIPTION**

Our Stock # 18.5588

This is an antique tilt-top table, an English, mahogany side table dating to the early 19th century, circa 1800.

- Appealing patina and grain interest in the mahogany
- Good colour depth shining through the wax polished finish
- Modest proportions ideal as a lamp or side table
- Raised on a stout, turned barrel column
- Iron catch locking down the tilt top to a steady platform
- A tripod of cabriole legs splay out to spade feet

A good example of an antique tilt-top table with solid joints and construction. Delivered waxed, polished and ready for the home.

Search [London Fine for #18.5588](#) , or scan the QR code for more photos and details

DIMENSIONS

Max Width: 80cm (31.5")

Max Depth: 80cm (31.5")

Max Height: 69cm (27.25")

