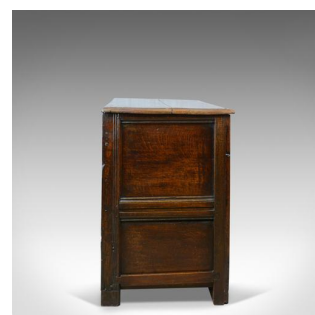


## Antique Mule Chest, English, Oak, Trunk, 18th Century, Circa 1700



### DESCRIPTION

Our Stock # 18.5661

This is an antique mule chest, an English, oak trunk dating to the early 18th century, circa 1700.

- Attractive English oak with good colour and an aged patina
- Three chamfered field panel front over a pair of drawers
- Two panel sides, panelled to the reverse, raised on squat stile feet
- The field panel front displays well with grain interest
- Stiles, rails and muntins with visible pegs for strength
- Panel drawer fronts dressed with later, pierced brass back-plates and drop handles
- Thick, planked lid with moulded edge detail, lifts on iron strap hinges
- Iron lock behind later brass lock escutcheon, key absent
- Great proportions providing voluminous storage

A super antique mule chest with solid joints and construction. Delivered waxed, polished and ready for the home.

Search [London Fine for #18.5661](#) , or scan the QR code for more photos and details

### DIMENSIONS

Max Width: 123cm (48.5")

Max Depth: 56cm (22")

Max Height: 84cm (33")

