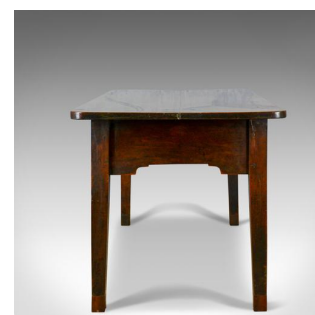




French Antique Patisserie Table, Mahogany, Country Kitchen Dining Circa 1800



DESCRIPTION

Our Stock # 18.5673

This is a French antique patisserie table, a 19th century, mahogany, country kitchen dining table dating to circa 1800.

- Solidly constructed in stout stocks of quality mahogany
- Good colour, displaying grain interest with a desirable aged patina
- Mid-sized offering russet hues with clean, simple lines
- Thick, two plank top displays well
- Stout, square section legs with broad, shaped apron
- Single frieze drawer to one side displaying hand cut dovetail joints

A delightful French antique patisserie table with solid joints and construction. Delivered waxed, polished and ready for the home.

Search [London Fine for #18.5673](#) , or scan the QR code for more photos and details

DIMENSIONS

Max Width: 164cm (64.5")

Max Depth: 80.5cm (31.75")

Max Height: 78cm (30.75")

Knee Clearance Max: 60cm (23.5")

Knee Clearance Ends: 56cm (22")

