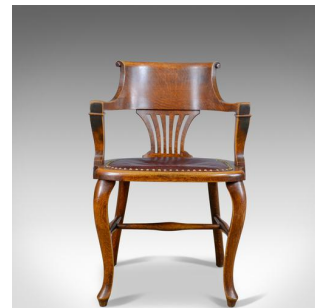


Antique Elbow Chair, English, Oak, Leather, Office, Desk, Captains, Study
c.1910



DESCRIPTION

Our Stock # 18.5603

This is an antique elbow chair, an English, Edwardian, oak and leather office desk or Captain's study armchair dating to the early 20th Century, circa 1910.

- Appealing honey tones to the solid English oak
- Attractive grain detail and a desirable aged patina
- Of quality craftsmanship in select materials
- Beautifully proportioned, scrolled backrest
- Flows into shaped, supportive armrests
- Decorative, pierced fan back splat
- Generous seat pad, webbed and traditionally stuffed
- Upholstered in a claret leather with a brass studded finish
- Rounded seat rail for added comfort on the legs
- Raised on cabriole legs to the front and shaped rears
- United by a bulged 'H' stretcher for added strength

Search [London Fine for #18.5603](#) , or scan the QR code for more photos and details

DIMENSIONS

- Max Width: 57cm (22.5")
- Max Depth: 51cm (20")
- Max Height: 82cm (32.25")
- Seat Width: 45.75cm (18")
- Seat Depth: 43cm (17")
- Seat Height: 46.5cm (18.25")

